

MUSEUM + TOUR HOURS AND RATES

Hours vary seasonally. For current hours and rates for the museum and tours, please visit us online at historicsonora.net.

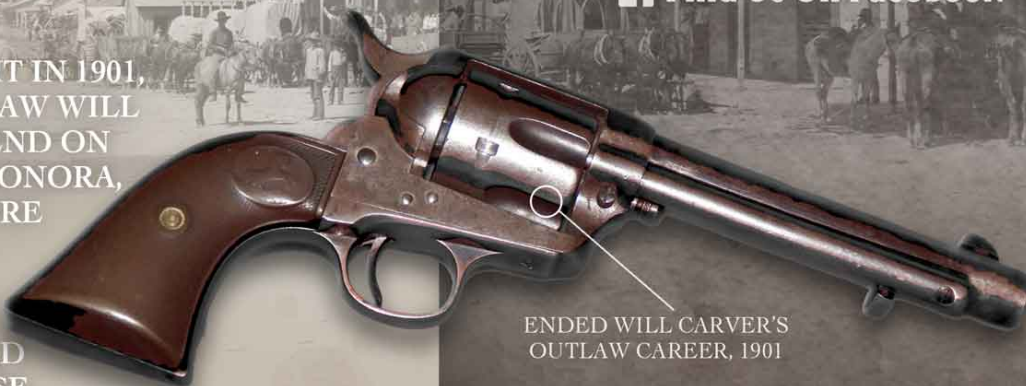
TOURS + PACKAGES

We offer standalone or combined tours of the museum and historic downtown. For a complete experience, choose a package option with a ticket purchase that covers entry fees to additional area attractions.

- ★ Museum Tours
- ★ Guided Historic Downtown Tours
- ★ Special Group Tours
- ★ Explore Sonora Tour Package
 - Museum + Historic Downtown
 - Caverns of Sonora
 - Eaton Hill Nature Center & Preserve

SONORA, TEXAS MAIN STREET CIRCA 1899

ON A SPRING NIGHT IN 1901, NOTORIOUS OUTLAW WILL CARVER MET HIS END ON THE STREETS OF SONORA, TEXAS. LEARN MORE ABOUT CARVER AND SEE THE SIX-SHOOTER THAT BROUGHT HIS WILD CAREER TO A CLOSE.



ENDED WILL CARVER'S
OUTLAW CAREER, 1901

SONORA TEXAS

HISTORIC DOWNTOWN



206 S. Water Avenue
(across from Sutton County Courthouse)

Sutton County Historical Society

P.O. Box 885

Sonora, Texas 76950

Phone: 325-387-3754

email: icehousemuseum1@yahoo.com

online: www.historicsonora.net

 Find Us On Facebook

HISTORIC DOWNTOWN SONORA TEXAS



Sonora, Texas TAKE A STEP BACK IN TIME

Featuring exhibits of old Sonora and pioneer ranching activities. Experience true ranching history and local heritage.



OLD ICE HOUSE RANCH MUSEUM

Our exhibits feature a wide and wonderful array of historical artifacts to educate and entertain visitors about area ranching in the late 19th and early 20th century. Delightfully paired with heritage exhibits, you'll find a special exhibit discussing Will Carver - a member of the infamous "Wild Bunch" gang that met his fate on the streets of Sonora. Visitors will leave with a new appreciation for the pioneers that developed this rugged area of Texas following the discovery of a deep water well. Learn how the discovery of the well opened this parched prairie to sheep, cattle and goats long after the bustle of the West had passed it by.

COURTHOUSE SQUARE

Designed by Oscar Ruffini and constructed in 1893, the Sutton County Courthouse anchors historic downtown. The adjacent jail was built in 1891 and housed outlaws like Will Carver. See Carver's pistol at the Ice House Museum. See them both with a guided tour.



COURTHOUSE

The Sutton County Courthouse is fully restored.

HISTORIC JAIL

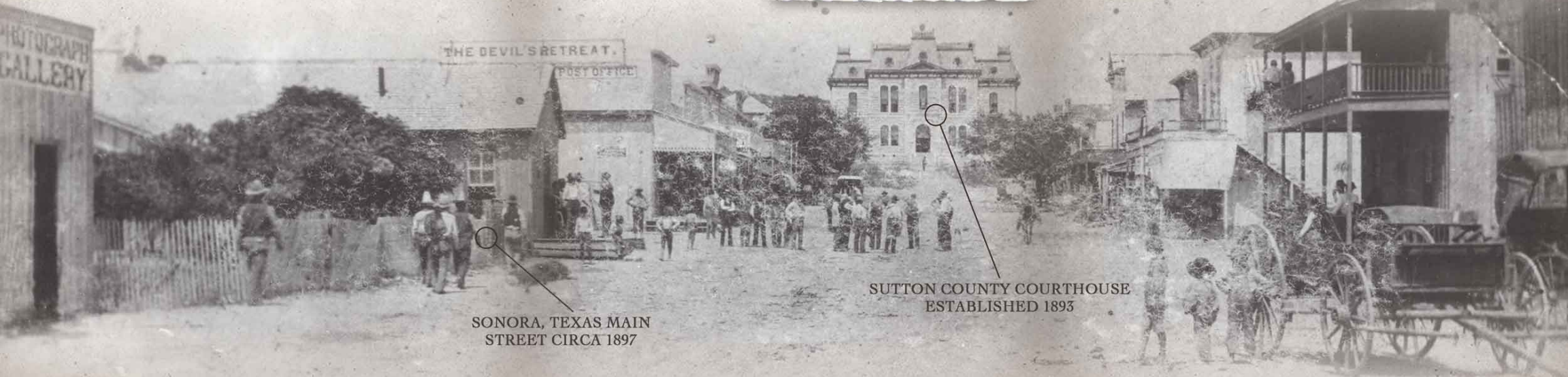
The historic jail houses years of history, having been home to locals and outlaws alike.



MIERS HOME MUSEUM & DEPOT

Across the street from Courthouse Square you'll find the Miers Home Museum, dedicated to one of Sonora's first families. Take a step back in time at this authentic frontier homestead.

The historic Depot is located just behind the Miers Home Museum. This Santa Fe Depot, built in 1930, watched over the busy stock shipping activities that tied the economy of Sutton County to the rest of the nation. While local trains sailed into history in 1977, today it serves both as an attraction and as a venue available for rental. To rent, please visit historiconsonora.net.



SONORA, TEXAS MAIN STREET CIRCA 1897

SUTTON COUNTY COURTHOUSE ESTABLISHED 1893